

ACMEDA AWNINGS

//PIUMA SYSTEM

Piuma is an open style versatile awning, ideal for medium sized applications, achieving up to 6m span and 3m projections. Our European design and made Piuma awning features double stainless steel cable arms, with the performing DAT system.

FEATURES

- / Manual or motorised system.
- / Tested to withstand winds up to 50km/h.
- / Can achieve up to 6m widths & 3m projection.
- / Wall or Top fix installation
- / Optional Aluminium protection hood.
- / Stainless Steel fixings.
- / Cable Arm with DAT System.
- / Offering between 5 to 90 degree inclination.

COLOUR RANGE

White Graphite



Independantly
tested and
approved by



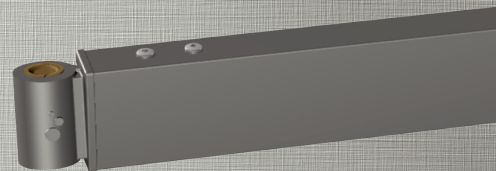
ACMEDA
PRECISION IN MOTION

//CABLE ARM SYSTEM

Piuma features the Fusion Arm with a tensioned, spring loaded, double stainless steel cable, PVC coated for added protection against corrosion.

FEATURES

- / Outstanding mechanical performance.
- / Fabric damage prevention.
- / Maximum durability
- / Arms can be adjusted to tilt in single degree increments.



PIUMA

open



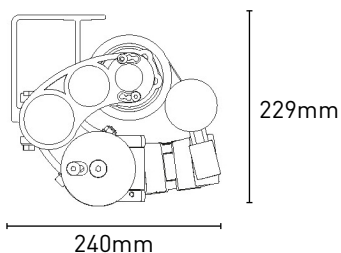
PIUMA

closed



FIXING DIMENSIONS

WALL/TOP FIX with folded arms
5° incline

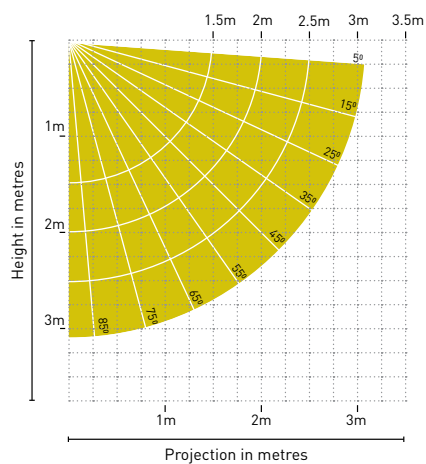


MAX AWNING DIMENSIONS

Max width: 6m
Max projection: 3m

5yr Hardware Warranty

ARM PROJECTION



YOUR ACMEDA AWNINGS SUPPLIER: