

FOLDING ARM AWNING SYSTEM

STEIN



FEATURES

- Class 2 wind resistance according to European standard EN 13561 (600x315 cm)
- HOME arms with DATSystem
- Manually operated or motorized
- Continuous micrometric regulation of inclination
- Available with protective hood
- Certified Italian Stainless steel screws and pins
- Certified by TÜV Rheinland
- Design patented
- Wall or ceiling installation
- Inclination ranges between 5° and 85°
- Maximum size of a single section: 700x365 cm
- Available with protective hood

COLOUR RANGE

Graphite White Black



FABRIC PROTECTION HOOD



AUSTRALIA | EUROPE | USA rolleaseacmeda.com

© Rollease Acmeda Pty Ltd

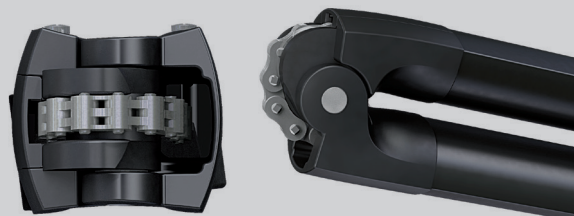
 **ROLLEASE
ACMEDA**
PRECISION IN MOTION

UNIQUE ARM SYSTEM

The class performing DAT (Dynamic Arm Torsion) system design ensures optimum chain & fabric damage prevention. The awning arms open and close without touching fabric during operation. The DAT System features only stainless steel screws, bolts and pins and is the most advanced choice for your awnings.

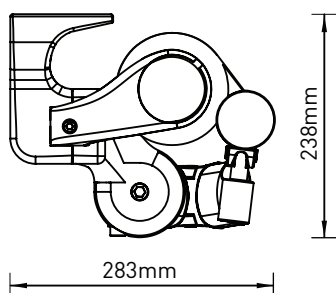
FEATURES

- Strong and secure eight link stainless steel chain.
- Outstanding mechanical performance.
- Fabric damage prevention.
- Teflon coated for marine grade protection.
- Arms can be adjusted to tilt in single degree increments.

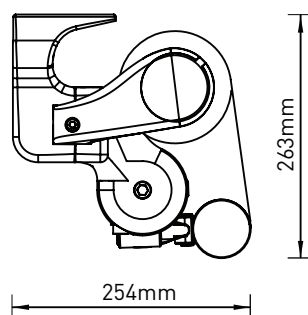


DIMENSIONS

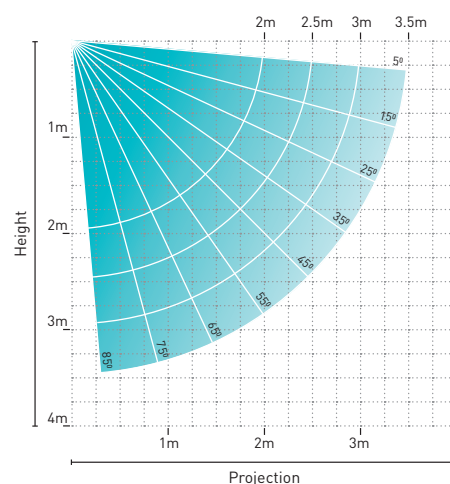
WALL/TOP FIX
5° inclination



85° inclination



ARM PROJECTION



SYSTEM CAPACITY

Max width: 7m (14m Joined)
Max projection: 3.65m

Wind Resistance: Class 2,
EN 13561 (600 cm x 315 cm)

Independently tested and approved by



AUTOMATE MOTORISATION



Easily control your motorised awning with a remote control or smart phone device using the Automate App & Pulse 2 hub. Control awnings from anywhere in the world, set scenes and timers for automatic control and always know what your awnings are doing thanks to ARC bi-directional live feedback. The Pulse 2 also integrates with smart voice-assistants such as Google Assistant, Amazon Alexa and now Apple HomeKit with Siri.

